



6000 EAST STATE STREET - ROCKFORD, ILLINOIS

FOR MORE INFORMATION

Shane Van Sickle

shane@lmcoss.com

815.639.0034 ext 16

LandMark Real Estate Group
6735 Vistagreen Way, Suite 100
Rockford, Illinois 61107

Ph 815.639.0034

Fx 815.639.0029

www.lmcoss.com



LandMark Real Estate Group presents four independent office suites on two floors totaling 23,831 RSF within a class-A, five story professional complex, overlooking

one of the market's most heavily traveled corridors at over 64,000 VPD .

BUILDING HIGHLIGHTS

Class-A Finishes

Flexible floor plans

Two-story atrium

Key card access

Double loading docks and elevators

Local property management

Parking ratio: 4.3 per 1,000 SF

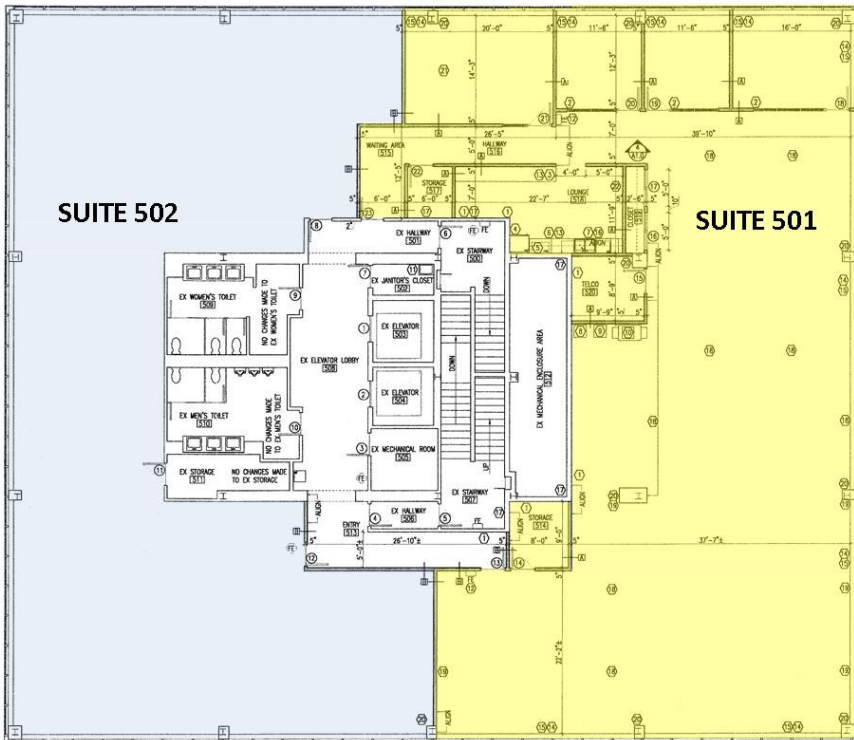
Negotiable occupancy

Lease rate: please call for current pricing



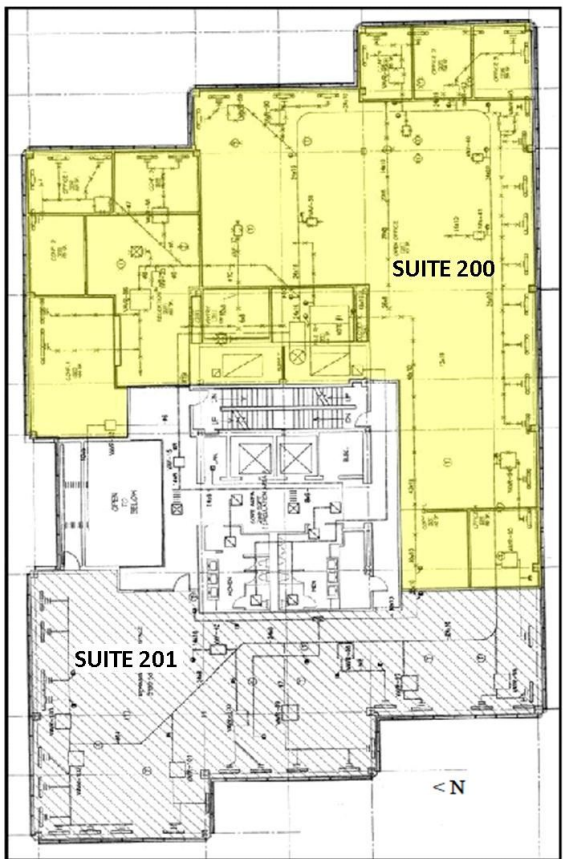
AVAILABILITY

Available spaces are located on second and fifth floors and can accommodate leasing requirements from 4,157 to 23,831 SF.



SPACES AVAILABLE

- SUITE 501 - 5,976 RSF
- SUITE 502 - 4,157 RSF
- SUITE 200 - 9,064 RSF
- SUITE 201 - 4,634 RSF



LOCATION AND ACCESS

Prominently positioned at the northeast corner of Mulford Road and East State Street, the location is convenient to all local arteries, regional highways, and is just 1.7 mi from I90/39. Rockford is centrally located 80 miles NW of Chicago and 85 miles SW of Milwaukee .

